



# SECTION 12

# Hydrants and Wellpoints



## PRODUCT LINE

## PAGE

Cup Leathers	12.011 A-G
Cylinder Replacement Parts, Operating Data	12.010
Cylinders - All No Lead Brass	12.008 A-B
Cylinders - All No Lead Brass; Eureka	12.009
Drive Shoes	12.005 A-B
Drive Well Point Supplies	12.004
Drive Well Points	12.003 A-C
Leathers - Universal	12.012
No Lead Yard Hydrants - Frost Proof	12.001 A-B
Pitcher Pump	12.006
Rod Couplings	12.007
Yard Hydrants - Replacement Parts	12.002 A-B



# No Lead Yard Hydrants - Frost Proof



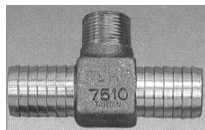
5451NL Series



HVBAD75NL



NLRBHE Series



NLRBHT Series



SSHE Series



SSHT Series

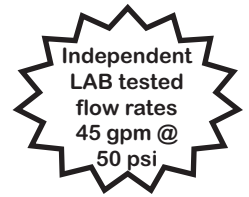
## NO LEAD Series Frost Proof Yard Hydrant

### Features:

- Fully frost proof, shut-off valve below frost line.
- Heavy cast iron head with 3/4" brass discharge connection and bucket hook.
- Can be padlocked.
- Heavy, galvanized steel, corrosion resistant, 1" stand-pipe.
- Galvanized carbon steel connecting rod. Stainless steel operating rod.
- Long lasting Buna-N rubber plunger with solid brass core.
- Integral valve seat cast into brass valve body. 3/4" FPT connection with double bypass bottom valve for superior flow, less risk of debris blockage.
- 1/8" FPT back drain hole.
- Rated to 80 PSI, adjustable. See page 2.18 for adjustment procedure.
- Packed securely in individual heavy weight carton.
- Independent lab tested.
- Lead Free. **Third party certified to NSF/ANSI 372.**



**CLAYTON MARK**®



Part Number	Bury Depth	Overall Length	Weight (Pounds)
54511NL	1	42"	12.4
54512NL	2	54"	15.2
54513NL	3	66"	17.8
54514NL	4	78"	21.0
54515NL	5	90"	22.3
54516NL	6	102"	26.2
54518NL	8	126"	30.7

Part Number	Description
<b>NO LEAD Vacuum Breaker Meets ASSE 1011</b>	
HVBAD75NL	3/4"NL Brass w/ auto back drain fght x mght 10/100

Part Number	Size	# Barbs	Ctn/Case Qty
<b>No Lead Cast Bronze Hydrant Elbow (INSxMIP)</b>			
NLRBHE3/4	3/4" x 3/4"	5	10/100
NLRBHE1X3/4	1" x 3/4"	5	10/100
NLRBHE1	1" x 1"	5	10/100
NLRBHE11/4	1 1/4" x 1 1/4"	5	5/50
<b>No Lead Cast Bronze Extra Long Hydrant Elbow (INS x MIP)</b>			
NLXLRBHE1	1" x 1"	8	10/100
NLXLRBHE1X3/4	1" x 3/4"	10	10/100
<b>No Lead Cast Bronze Hydrant Tee (INS x MIP)</b>			
NLRBHT3/4	3/4" x 3/4"	4	10/100
NLRBHT1x3/4	1" x 3/4"	6	10/100
NLRBHT1	1" x 1"	4	10/100
<b>Stainless Steel Hydrant Elbow (INSxMIP)</b>			
SSHE3/4	3/4" x 3/4"	5	10/100
SSHE1X3/4	1" x 3/4"	5	10/100
SSHE1	1" x 1"	5	10/100
SSHE11/4	1 1/4" x 1 1/4"	5	10/50
<b>Stainless Steel Hydrant Tee (INS x MIP)</b>			
SSHT3/4	3/4" x 3/4"	4	10/100
SSHT1x3/4	1" x 3/4"	6	10/100
SSHT1	1" x 1"	4	10/100



[www.cbsupplies.ca](http://www.cbsupplies.ca)  
 Phone: (866) 503-5523 Fax: (888) 562-2095  
 AGI@cbsupplies.ca





# No Lead Yard Hydrants - Frost Proof



## Deluxe NO LEAD Frost Proof Yard Hydrant Features:

- FROST-PROOF - Shut-off valve operates below the frost line.
- Pistol type handle eliminates pinching.
- Can be padlocked.
- Wheel handle controls water flow at rate desired.
- Stainless steel extension rod will not rust or cut into packing.
- Water in standpipe drains out when hydrant is off.
- Aluminum nozzle threaded for standard 3/4" hose coupling.
- Inner parts removable without digging.
- 120 PSI maximum pressure.
- Individually boxed.



NL Series is Lead Free and certified to NSF/ANSI 372 <0.25% Pb by weighted average.

**NOT FOR SALE IN CALIFORNIA.**  
Does NOT meet CA Prop 65.

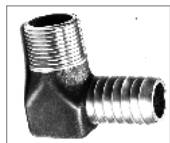
NO LEAD Part No.	Bury Depth	Pipe Length	Overall Length	Ctn Qty
H800NL	1 ft	30"	40"	1
H801NL	1.5 ft	38"	48"	1
H802NL	2 ft	44"	54"	1
H803NL	3 ft	56"	66"	1
H804NL	4 ft	68.5"	78.5"	1
H805NL	5 ft	80.5"	90.5"	1
H806NL	6 ft	92.25"	102.25"	1
H807NL	7 ft	104"	114"	1
H808NL	8 ft	116"	126"	1



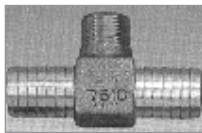
HVBAD75NL



Part Number	Description	Ctn/Case Qty
<b>NO LEAD Vacuum Breaker Meets ASSE 1011</b>		
HVBAD75NL	3/4"NL Brass w/ auto back drain fipt x ght	10/100



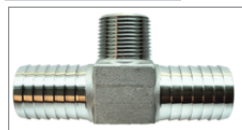
NLRBHE Series



NLRBHT Series



SSHE Series



SSHT Series

Part Number	Size	# Barbs	Ctn/Case Qty
<b>No Lead Cast Bronze Hydrant Elbow (INSxMIP)</b>			
NLRBHE3/4	3/4"x 3/4"	5	10/100
NLRBHE1X3/4	1" x 3/4"	5	10/100
NLRBHE1	1" x 1"	5	10/100
NLRBHE11/4	1 1/4" x 1 1/4"	5	5/50
<b>No Lead Cast Bronze Extra Long Hydrant Elbow (INS x MIP)</b>			
NLXLRBHE1	1"x 1"	8	10/100
NLXLRBHE1X3/4	1" x 3/4"	10	10/100
<b>No Lead Cast Bronze Hydrant Tee (INS x MIP)</b>			
NLRBHT3/4	3/4" x 3/4"	4	10/100
NLRBHT1x3/4	1" x 3/4"	6	10/100
NLRBHT1	1" x 1"	4	10/100
<b>Stainless Steel Hydrant Elbow (INSxMIP)</b>			
SSHE3/4	3/4"x 3/4"	5	10/100
SSHE1X3/4	1" x 3/4"	5	10/100
SSHE1	1" x 1"	5	10/100
SSHE11/4	1 1/4" x 1 1/4"	5	10/50
<b>Stainless Steel Hydrant Tee (INS x MIP)</b>			
SSHT3/4	3/4" x 3/4"	4	10/100
SSHT1x3/4	1" x 3/4"	6	10/100
SSHT1	1" x 1"	4	10/100



[www.cbsupplies.ca](http://www.cbsupplies.ca)  
Phone: (866) 503-5523 Fax: (888) 562-2095  
AGI@cbsupplies.ca





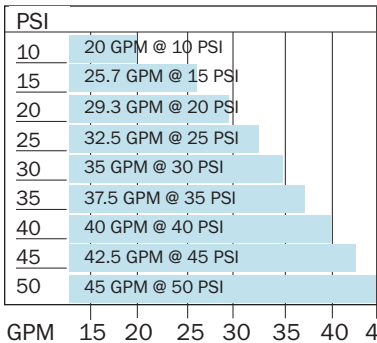
# Yard Hydrants - Replacement Parts



**CLAYTON MARK**®



3/4" 5451NL Hydrant Flow Rates



## 5451NL Series Hydrant Replacement Parts

Part Number	Item Number	Description
YRK1		Repair Kit (Items 1-8)
9175B	1	Plunger - BUNA N rubber/brass
9023B	2	Fulcrum Bolt - zinc plated steel
9023C	3	Fulcrum Nut - zinc plated steel
9023D	4	Links (set of 2) - zinc plated steel
9023E	5	Set Screw square head - zinc plated steel
9023A	6	Packing Nut - brass
29609G	7	Packing - graphite (2 - 1 old, 1 new style)
9023G	8	Connector - brass
2506K	9	Handle - painted cast iron
2222AHSS	10	Clevis Rod - SS NEW STYLE (for double bypass)
2500K	11	Head only - painted cast iron
382914	13	Hose Adapter - brass
381504	14	Valve Body - brass
2575K		Complete Head Assembly (Items 2-13)

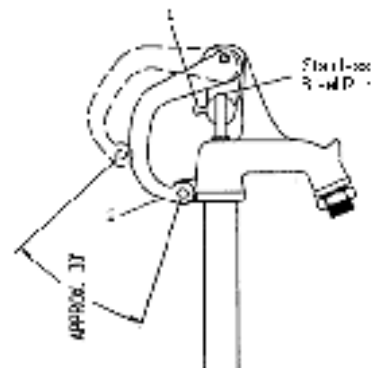
### STEEL ROD (use with double bypass valve 5451 Series)

TA7100099NS	54511 Rod (32.4")
TA7100100NS	54512 Rod (44.4")
TA7100101NS	54513 Rod (56.4")
TA7100102NS	54514 Rod (68.4")
TA7100103NS	54515 Rod (80.4")
TA7100104NS	54516 Rod (92.4")
TA7100105NS	54518 Rod (116.4")

**NOTE: All 5451NL Series Hydrants are preset at factory. There should be no need for any adjustment on initial installation. Adjust only if water does not shut off or hydrant does not operate properly.**

## 5451NL HYDRANT ADJUSTMENT PROCEDURE

- Turn water supply OFF.
- Open hydrant to relieve pressure.
- Loosen set screw. (Item 1)
- Push brass rod down as far as it will go by hand to be sure the plunger is touching the seat.
- Open handle (Item 2) approximately 30° from closed position.
- Tighten set screw snugly.
- Turn water supply ON.
- Operate hydrant and make sure the hydrant is shutting off properly and flowing properly.
- If hydrant still does not shut off, repeat steps 1 through 8.**
- Flow water through hydrant and then close completely to check for proper drainage by:
  - listening for water draining down pipe or
  - putting your hand over the hose connection to feel for a vacuum.
 If hydrant does not drain, see step 11.
- To clear drain hole blockage, close off hydrant spout by using hose cap or by attaching and kinking a hose. Open and close hydrant to allow water pressure to clear blockage. Repeat step 10 to verify proper drainage. If hydrant still does not drain, repeat steps 1 through 10 to fully uncover drain hole.



**CAUTION: Do not try to make the shutoff adjustment in one attempt or you may overadjust and cause damage to the plunger and**

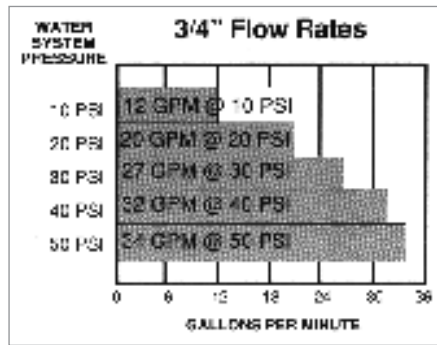
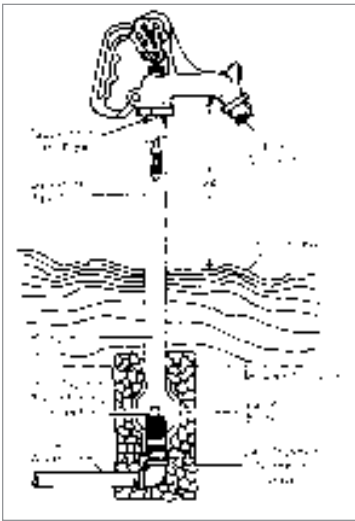


**www.cbsupplies.ca**  
 Phone: (866) 503-5523 Fax: (888) 562-2095  
 AGI@cbsupplies.ca

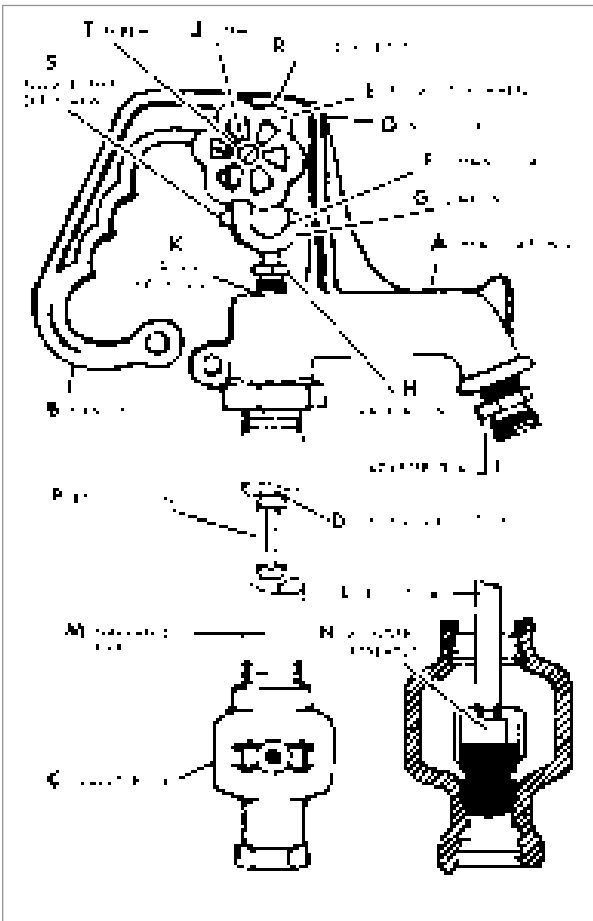




# Yard Hydrants - Replacement Parts



## Replacement Parts For H800 Series Hydrants



Part Number	Reference Number	Name of Part
8820	A	Head
8821	B	Handle
8822SB	C	Valve Body NL
8843	D	Stainless Steel Extension Rod 7/16"NL
8824	E	Hand Wheel
8825 *	F	Connector - brass
8826 *	G	Links(pair) - brass
8827 *	H	Packing Nut - brass
8844	I	Aluminum Hose Adapter NL
8829	J	Brass Stem, Square head
8839 *	K	O-Ring Packing, BUNA-N (pair)
8814-0	L	7/16" Pump Rod for H800NL
8814-1		7/16" Pump Rod for H801NL
8814-2		7/16" Pump Rod for H802NL
8814-3		7/16" Pump Rod for H803NL
8814-4		7/16" Pump Rod for H804NL
8814-5		7/16" Pump Rod for H805NL
8814-6		7/16" Pump Rod for H806NL
8814-7		7/16" Pump Rod for H807NL
8814-8		7/16" Pump Rod for H808NL
8815-0	M	Pipe Casing for H800NL
8815-1		Pipe Casing for H801NL
8815-2		Pipe Casing for H802NL
8815-3		Pipe Casing for H803NL
8815-4		Pipe Casing for H804NL
8815-5		Pipe Casing for H805NL
8842 *	N	Plunger - one piece NL
8834	P	Rod Coupling, 7/16"
8301 *	Q	Lock Nut - stainless steel
8836 *	R	Fulcrum Bolt - stainless steel
8837 *	S	Square Head Set Screw - stainless steel
8610	T	Screw for Hand Wheel
840SB		Head, Complete NL
850SB		Parts Kit NL (* Included)



[www.cbsupplies.ca](http://www.cbsupplies.ca)  
 Phone: (866) 503-5523 Fax: (888) 562-2095  
 AGI@cbsupplies.ca





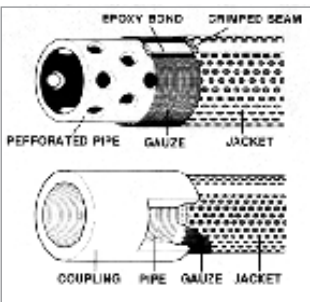
Drive Well Point

### Drive Well Point Features:

- Heavy duty ductile iron point to drive into all types of soil.
- Stainless steel jacket and gauze.
- Crimped seam eliminates peeling.
- Epoxy bonding at critical points.
- Locked at both ends.
- Lead free seam.
- Pipe coupling provided.
- Threaded, octagonal shoulder prevents turning while driving.
- Forms large enough hole to allow clearance for pipe couplings.
- Third party certified to NSF/ANSI 372.



**CLAYTON MARK®**



Part Number	Gauze	Pipe Length	Pipe Size	Ctn Qty
<b>Drive Points</b>				
SBD2460	60	24	1-1/4"	3
SBD3060	60	30	1-1/4"	3
SBD3660	60	36	1-1/4"	3
SBD4260	60	42	1-1/4"	3
SBD4860	60	48	1-1/4"	3
SBD6060	60	60	1-1/4"	3
SBD2480	80	24	1-1/4"	3
SBD3080	80	30	1-1/4"	3
SBD3680	80	36	1-1/4"	3
SBD4280	80	42	1-1/4"	3
SBD4880	80	48	1-1/4"	3
SBD6080	80	60	1-1/4"	3
SBD30100	100	30	1-1/4"	3
SBD36100	100	36	1-1/4"	3
SBD48100	100	48	1-1/4"	3
SCD&F3060	60	30	1-1/2"	3
SCD&F3660	60	36	1-1/2"	3
SCD&F4860	60	48	1-1/2"	3
SCD&F6060	60	60	1-1/2"	3
SCD&F3680	80	36	1-1/2"	3
SCD&F4280	80	42	1-1/2"	3
SCD&F4880	80	48	1-1/2"	3
SDD&F3060	60	30	2"	3
SDD&F3660	60	36	2"	3
SDD&F4860	60	48	2"	3
SDD&F6060	60	60	2"	3
SDD&F3080	80	30	2"	3
SDD&F3680	80	36	2"	3
SDD&F4880	80	48	2"	3
SDD&F6080	80	60	2"	3

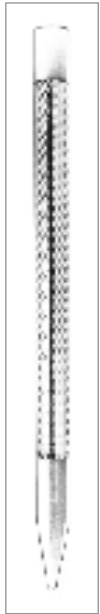




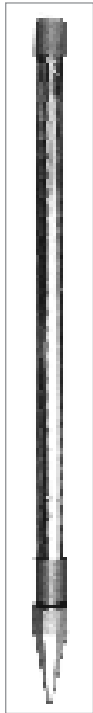
# Drive Well Points



**CLAYTON MARK<sup>®</sup>**



Flush Well Point



Combination Well Point

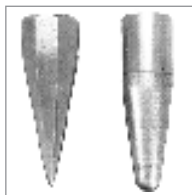
### Flush Well Point Features:

- Same as drive well points plus:
- Designed to pass through well casing & drive shoe into water bearing sand & gravel.
- Pipe coupling is designed to catch in a closed-pattern drive shoe.
- Beveled edges on point forms a positive grip on jacket, similar to single piece construction.
- Stainless steel jacket & gauze

### Combination Well Point Features:

- Can be used as a regular well point or as an open end screen.
- Stainless steel jacket & gauze

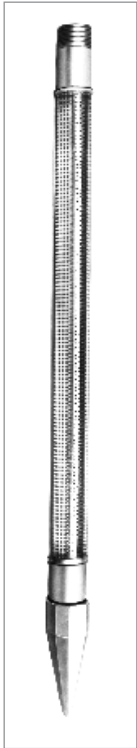
Part Number	Gauze	Pipe Length	Pipe Size	Ctn Qty
<b>Flush Well Points</b>				
SBF3660	60	36	1-1/4"	3
SBF4260	60	42	1-1/4"	3
SBF4860	60	48	1-1/4"	3
SBF3680	80	36	1-1/4"	3
SBF4280	80	42	1-1/4"	3
SBF4880	80	48	1-1/4"	3
SBF48100	100	48	1 1/4"	3
<b>Combination Well Points</b>				
SBC2460	60	24	1-1/4"	3



Drive & Flush Well Point Head

Part Number	Type	Pipe Size
<b>Well Point Heads</b>		
A1120041	Drive	1-1/4"
A1120005	Drive	1-1/2"
A1120006	Drive	2"
A1120007	Flush	1-1/4"





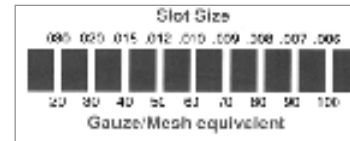
I-Series

### Imperial Series Features:

- Designed to be driven into all types of soil.
- Imperial series are wrapped outside with a stainless steel screen
- Stainless steel jacket over gauze construction is permanently fixed to perforated steel pipe.
- Design allows the passage of all the sand free water the pipe can carry.
- Cast iron drive point head can be removed for easy field extension by coupling together with the second well point for added capacity.

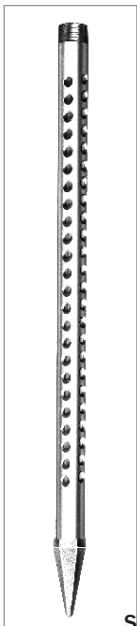


Part No.	Simmons	Pipe Size	Length	Gauze	Ctn Qty
<b>Imperial with Outer Stainless Steel Gauze</b>					
I90-60	1720-1	1 1/4	24"	60	1
I94-60	1721-1	1 1/4	30"	60	1
I98-60	1722-1	1 1/4	36"	60	1
I100-60	1723-1	1 1/4	42"	60	1
I102-60	1724-1	1 1/4	48"	60	1
I136-60	1740-1	1 1/2	24"	60	1
I138-60	1741-1	1 1/2	30"	60	1
I144-60	1742-1	1 1/2	36"	60	1
I168-60	1752-1	2	36"	60	1
I172-60	1753-1	2	48"	60	1
I176-60	1754-1	2	60"	60	1
<b>Imperial with Inner Stainless Steel Gauze</b>					
I90-80	1726-1	1 1/4	24"	80	1
I94-80	1727-1	1 1/4	30"	80	1
I98-80	1728-1	1 1/4	36"	80	1
I102-80	1730-1	1 1/4	48"	80	1
I138-80	1746-1	1 1/2	30"	80	1
I144-80	1747-1	1 1/2	36"	80	1



### Standard Series Features:

- For use in rocky or sandy soil.
- Standard series are wrapped inside with a stainless steel screen.
- Unique corrosion resistant construction features protect stainless steel gauze held in place between galvanized pipe and a stainless steel liner.
- Self flushing chamfered holes in galvanized pipe eliminate clay or sand build-up, giving maximum water yield with minimum development time.



S-Series

Part No.	Simmons	Pipe Size	Length	Gauze	Ctn Qty
<b>Standard Series with Inner Stainless Steel Gauze</b>					
S94-60	1721	1 1/4	30"	60	1
S98-60	1722	1 1/4	36"	60	1
S102-60	1724	1 1/4	48"	60	1
S168-60	1752	2	36"	60	1
S172-60	1753	2	48"	60	1
S176-60	1754	2	60"	60	1
<b>Standard Series with Outer Stainless Steel Gauze</b>					
S94-80	1727	1 1/4	30"	80	1
S98-80	1728	1 1/4	36"	80	1







**80002C**  
Sand Shark  
Valve

### “Sand Shark”, Backwash Valves Features:

- Used in soft soil to jet open-end screen to desired depth.
- Thickwalled, cast iron construction with saw teeth to rip through roots and debris.
- Solid ABS ball check keeps sand from entering well when jetting operations are complete.
- Not spring loaded.



**8660B**  
Backwash  
Valve

Part Number	Valve Size	Pressure Pipe Tap	Ctn Qty
80002C	2" NPT Male	1" NPS Left Hand Female	Bulk

Part Number	Pipe Size	Description	Ctn Qty
8660B	2"	No. 19B S/Steel Ball	12



**434 Series**

### Turned Coupling Features:

- Used for suspending flush well points or strainers from drive shoes or tubular cylinders.
- Galvanized with standard pipe thread.
- Furnished with right hand pipe threads.
- Thin wall 434J.
- Third party certified to NSF/ANSI 372.



Part Number	Rt. Hand Thread Pipe Size	Well Size	Strainer Size	Coupling O.D.	Coupling Length	Ctn Qty
<b>Turned Couplings</b>						
434J11/4X11/4	1-1/4 x 1-1/4"	2	1"	1 13/16"	2-1/4"	48
434-11/4X11/4	1 1/4 X 1 1/4"	2	1 1/4	1 15/16"	2 1/4	48



**DC**

### Galvanized Drive Coupling Features:

- Heavy pattern with deep recess for shouldering on imperfect threads of well points.
- Assures proper driving of well points and standard pipe.
- Taper tapped, reamed and drifted.
- Third party certified to NSF/ANSI 372.

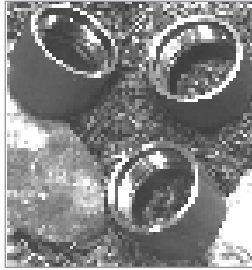


**C125**

### Drive Cap Features:

- Heavy duty forged steel.
- Standard pipe threads.
- Vented on top.

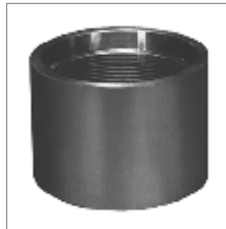
Part Number	Description	Pipe Size	Length (in.)	Ctn Qty
<b>Galvanized Drive Couplings</b>				
DC125C	1-1/4"	1-1/4"	2.75	40
DC150	1-1/2"	1-1/2"	2.75	40
DC200	2"	2"	2.90	30
DC200L	2" Long Pattern	2"	3.40	30
<b>Drive Caps</b>				
C125	Heavy Duty Forged Steel	1-1/4"		32
C200	Heavy Duty Forged Steel	2"		16



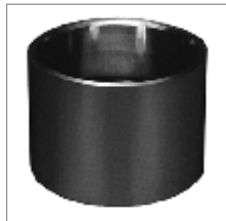
Drive Shoes

### Drive Shoe Features:

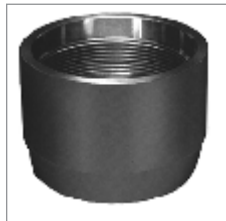
- Alloy grade seamless stock.
- Special process to strengthen the material before heat treating.
- All drive shoes are heat treated.
- All drive tips are flame hardened for superior driving strength.
- All drive shoes are tested for dimensional accuracy and tip hardness.
- Baked on phosphate coating to protect from corrosion.
- Cable and Rotary style.
- Weld-on and threaded.
- Third party certified NO LEAD to NSF/ANSI 372.



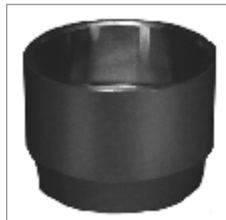
7000 Series



7055 Series



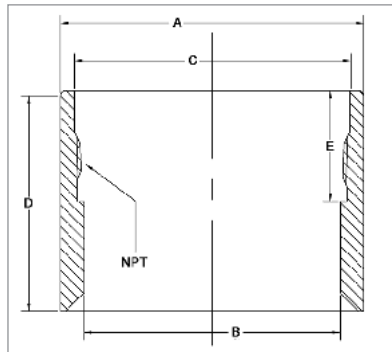
7005 Series



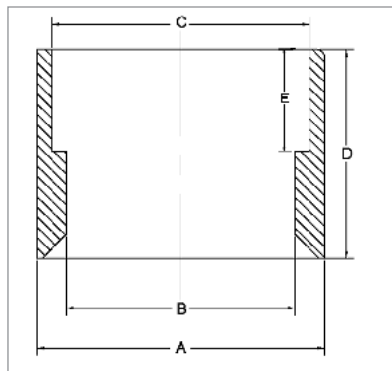
7007 Series

Part Number	Nominal Pipe Size	Description	Ctn Qty
<b>Threaded Cable Tool Style</b>			
7000A	2"	Open Pattern	50
7000D	2"	<b>Closed</b> Pattern, extended threads (P&R)	28
7000E	3"	Open Pattern	12
7000GL	4"	Open Pattern	9
7000J	5"	Open Pattern	5
7000K	6"	Open Pattern (6.125" ID)	4
7000N	6"	<b>Short</b> Pattern (6.125" ID)	4
7000KLD	6"	Open Pattern (6.25" ID)	4
7059X	8"	Open Pattern	1
<b>Weld-On Cable Tool Style</b>			
7055E	3"	Open Pattern	12
7055GL	4"	Open Pattern	9
7055J	5"	Open Pattern	5
7055K	6"	Open Pattern (6.125" ID)	4
7055R	6"	<b>Short</b> Pattern (6.125" ID)	4
7055M	8"	Open Pattern	1
7055KLD	6"	Open Pattern (6.25" ID)	4
7055N	10"	Open Pattern	1
<b>Threaded Rotary Style</b>			
7005A	4"	Open Pattern	9
7005B	5"	Open Pattern	4
7005C	6"	Open Pattern (6.125" ID)	4
7005H	6"	<b>Short</b> Pattern (6.125" ID)	4
7005CLD	6"	Open Pattern (6.25" ID)	4
<b>Weld-on Rotary Style</b>			
7007A	4"	Open Pattern	9
7007C	6"	Open Pattern (6.125" ID)	4
7007CLD	6"	Open Pattern (6.25" ID)	4

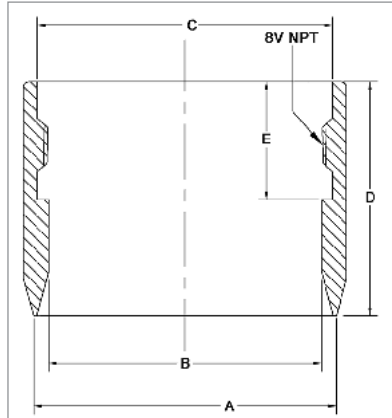




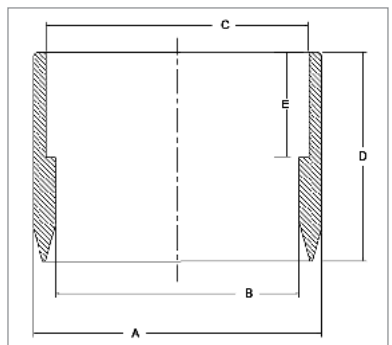
Threaded Cable Tool Style						
PART NO.	Nominal Pipe Size	Thread	A	B	C	E
7000A	2"	11 1/2V	2.88	2.06	2.45	2.88
7000D	2"	11 1/2V	2.88	1.84	2.45	2.88
7000E	3"	8V	4.00	3.10	3.50	3.50
7000GL	4"	8V	5.00	4.125	4.575	4.00
7000J	5"	8V	6.00	5.125	5.59	4.50
7000K	6"	8V	7.39	6.125	6.50	5.40
7000N	6"	8V	7.39	6.125	6.69	4.00
7000KLD	6"	8V	7.39	6.25	6.69	5.40
7059X	8"	8V	9.55	8.13	8.73	7.50



Weld On Cable Tool Style					
PART NO.	Nominal Pipe Size	A	B	C	E
7055E	3"	4	3.1	3.54	3.5
7055GL	4"	5	4.125	4.575	4.00
7055J	5"	6	5.125	5.59	4.50
7055K	6"	7.39	6.125	5.38	5.40
7055R	6"	7.39	6.125	6.69	4.00
7055KLD	6"	7.39	6.25	6.69	5.40
7055N	10"	11.75	10.25	10.875	8.00



Threaded Rotary Style						
PART NO.	Nominal Pipe Size	Thread	A	B	C	E
7005A	4"	8V	5	4.125	4.56	4.00
7005B	5"	8V	6	5.125	5.59	4.50
7005C	6"	8V	7.39	6.125	6.69	4.00
7005H	6"	8V	6.68	6.125	6.69	4.12
7005CLD	6"	8V	7.39	6.25	6.69	4.50



Weld-On Rotary Style					
PART NO.	Nominal Pipe Size	A	B	C	E
7007A	4"	5	4.125	4.575	4.00
7007C	6"	7.39	6.125	6.69	5.40
7007CLD	6"	7.39	6.25	6.69	5.40



HPP10

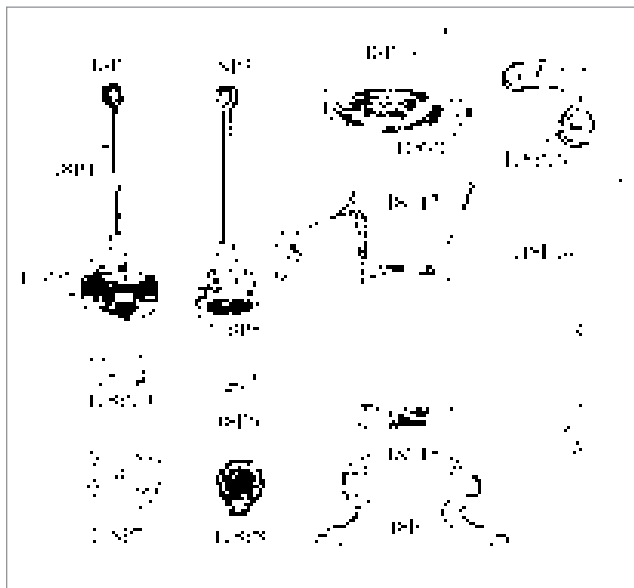
### HARVARD® Pitcher Pump Features:

- Recommended for shallow pump applications – depth rating up to 20'.
- Easily installed.
- Made of heavy cast iron.
- Dark green hard enamel rugged powder coated paint finish.
- Open spout.
- 15-3/4" high.
- Tapped for 1-1/4" drop pipe.
- 15 lbs.
- Pumps are individually packaged 4 per master carton.
- Parts are carton qty 1.
- Third party certified NO LEAD to NSF/ANSI 372.



Part Number	Description	Master Ctn Qty
HPP10	Pitcher Pump, Cast Iron, Size #2	4

### PITCHER PUMP REPLACEMENT PARTS



Part Number	Description
118P1	Complete Plunger Assembly (includes *)
118P2 *	Cup Leather for Plunger only
118P3	Plunger Rod and Cage (no cup leather)
118P4 *	Plunger Rod
118P5 *	Plunger Cage
118P6 *	Plunger Weight
118P7	Flat Leather for Base Valve
118P8	Weight and Screw for Flat Valve
118P9	Flat Valve Leather and Weight
118P10 *	Threaded Nut for Plunger Cage
118P11	Pump Base with Bolts (118P15)
118P12	Pump Cylinder
118P13	Pump Top with Set Screw (118P17)
118P14	Pump Handle with Two Bolts (118P16)
118P15	3/8 x1-1/4 Bolts for Pump Base (set of 2)
118P16	3/8 x 2 bolts for Pump Handle
118P17	Set Screw for Pump Top



720

### 720 Series Rod Coupling Features:

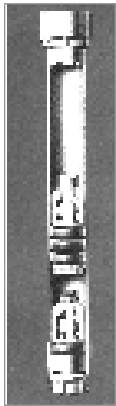
- Hexagon shaped, galvanized couplings.
- Made from solid bars of cold-rolled steel.
- Use to connect steel pump rods.



720 Rod Couplings				
Part Number	Size	Size of Hexagon	Overall Length	Ctn Qty
8075B1	3/8"x3/8"	5/8"	1-3/4"	25
8075C1	7/16"x3/8"	5/8"	1-3/4"	25
8075D1	7/16"x7/16"	5/8"	1-3/4"	25
8075E1	1/2"x3/8"	11/16"	1-3/4"	25
8075F1	1/2"x7/16"	11/16"	1-3/4"	25
8075G1	1/2"x1/2"	11/16"	1-3/4"	25
8075J1	5/8"x7/16"	13/16"	2-1/8"	BULK
8075K1	5/8" x 1/2"	13/16"	2 1/8"	BULK
8075L1	5/8"x5/8"	13/16"	2-1/8"	BULK



# Cylinders - All No Lead Brass



449 B



Replacement Parts



## 449B ALL BRASS Features:

- Corrosion resistant, all brass construction.
- Brass tubing offers a smooth working surface and extends the life of the leathers.
- Open top cylinder, threaded valves screw together for one-step removal.
- No need to pull cylinder to replace inner components.
- Reliable **BALL** plunger.
- Contains 707/45 series graphite leathers.
- Third party certified NO LEAD to NSF/ANSI 372.

Part Number	Inside Diameter X Stroke (inches)	Barrel Length (inches)	Caps Tapped Pipe Size Top/Bottom (inches)	Size Rod in Plunger (inches)	Smallest Well Cylinder will enter (inches)	Capacity Per Stroke US Gallons	Cup Leather Sizing	
							O.D. (inches)	Hole (inches)
7037HNL	1-7/8 x 14	24	2 x 1-1/4	5/8	3	.1680	1-7/8	1-5/16
7037RNL	1 7/8 X 20	30	2 X 1 1/4	5/8	3	.2400	1 7/8	1 5/16
7037LANL	2 1/4 X 25	36	2 1/2 X 1 1/2	7/8	3 1/2	.4303	2 1/4	1 1/2
7037EBNL	2 3/4 X 24	36	3 X 2	7/8	4 1/2	.6171	2 3/4	1 7/8

	1-7/8"	2-1/4"	2-3/4"
	Part Number	Part Number	Part Number
Plunger assembly w/ leathers	8599ANL	8599C	8599E
Check assembly w/ leathers	8533C	8533D1	8533E1
Leather for Plunger (707/45) Qty 3	707-221 17/8"x1 5/16"	707-334 21/4x11/2	707-384 23/4x17/8
Leather for Check (702/41) Qty 1	702-216 17/8"x1 5/16"	702-334 21/4x11/2	702-384 23/4x17/8

NOTE: PLEASE SEE PAGE 90 FOR REPLACEMENT PART PRICING.



www.cbsupplies.ca  
 Phone: (866) 503-5523 Fax: (888) 562-2095  
 AGI@cbsupplies.ca







# Cylinders - All No Lead Brass



442

## 442 ALL BRASS Features:



**CLAYTON MARK®**

- All brass plunger, plain poppet and two leathers.
- Closed flush cap, recommended for all types of working heads and small diameter, shallow wells.
- Perma-Kleen®, Buna N rubber check poppet facing for smooth, quiet operation and tight seal.
- Clearance of two inches is provided between plunger and check.
- Contains 711/44 Series waterproof leathers.
- “NL” designates NO LEAD.
- Third party certified NO LEAD to NSF/ANSI 372.



442 All Brass Part Number	Inside Diameter x Stroke (inches)	Barrel Length (inches)	Caps Tapped Pipe Size Top/Bottom (inches)	Size Rod in Plunger (inches)	Well Cylinder will enter (inches)	Smallest Capacity Per Stroke US Gallons	Cup Leather Sizing O.D. (inches)	Hole (inches)
7027ANL	1-11/16 x 8	16	1 x 1	7/16	2	.0768	1-11/16	1-3/16
7027BNL	1-11/16 x 10	16	1 x 1	7/16	2	.0960	1-11/16	1-3/16
7027MNL	1 11/16 X 12	20	1 X 1	7/16	2	.1152	1 11/16	1 3/16
7027CNL	1-13/16 x 8	16	1 x 1	7/16	2	.0896	1-13/16	1-3/16
7027DNL	1-13/16 x 10	18	1 x 1	7/16	2	.1120	1-13/16	1-3/16
7027D3NL	1-13/16 x 12	20	1 x 1	7/16	2	.1344	1-13/16	1-3/16
7027ENL	2 x 8	16	1 1/4 x 1 1/4	7/16	2-1/2	.1088	2	1-5/16
7027FNL	2 x 10	18	1 1/4 x 1 1/4	7/16	2-1/2	.1360	2	1-5/16
7027F1NL	2 X 12	20	1 1/4 X 1 1/4	7/16	2 1/2	.1632	2	1 5/16
7027HNL	2-1/4 x 8	16	1 1/4 x 1 1/4	7/16	3	.1377	2-1/4	1-3/8
7027JNL	2-1/4 x 10	18	1 1/4 x 1 1/4	7/16	3	.1721	2-1/4	1-3/8
7027DANL	2-1/4 x 10	18	1 1/2 x 1 1/4	7/16	3	.1721	2-1/4	1-3/8
7027P2NL	2-1/4 x 12	20	1 1/4 x 1 1/4	7/16	3	.2071	2-1/4	1-3/8
7027S3NL	2 1/2 X 8	18	1 1/4 X 1 1/4	7/16	3	.1700	2 1/2	1 5/8
7027LNL	2-1/2 x 10	20	1 1/4 x 1 1/4	7/16	3	.2125	2-1/2	1-5/8
7027FA3NL	3 x 10	20	1 1/4 x 1 1/4	7/16	3-1/2	.3060	3	2-1/8
7027UNL	3 x 10	20	2 x 1 1/4	7/16	3-1/2	.3060	3	2-1/8

442 Replacement Parts Description	1-11/16" Part Number	1-13/16" Part Number	2" Part Number	2-1/4" Part Number	2-1/2" Part Number	3" Part Number
Plunger Assembly w/ leather	8522A	8522B	8522CNL	8522D	8522F/8522FNL	8522J
Leather for Plunger (711/44)	711-151	711-198	711-264	711-333	711-358	711-638
2 each required	1-11/16x1-3/16	1-13/16x1-3/16	2x1-5/16	2-1/4x1-3/8	2-1/2x1-5/8	3x2-1/8

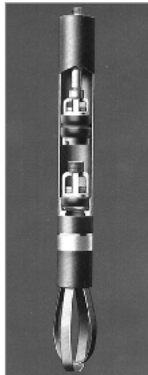




# Cylinders - All No Lead Brass Eureka



**CLAYTON MARK®**



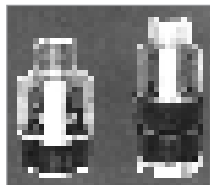
450

## 450 ALL BRASS EUREKA Features:

- Open top cylinder made for tubular wells and applications where the originally installed cylinder can't be removed.
- All brass valves with Perma-Kleen rubber poppet facings for smooth quiet operation and better seating.
- Threaded valves screw together for easy one-step removal.
- Spring dog holds unit in place until rubber packer is expanded by rotating drill rods.
- Packer creates a seal and anchors cylinder in place.
- Clearance of 2" is provided for operation between plunger and checks.
- "NL" designates NO LEAD.
- Third party certified NO LEAD to NSF/ANSI 372.



450 All Brass Eureka Cylinders						
Part Number	Size of Well (inches)	Inside Diameter of Cylinder (inches)	Stroke (inches)	Plunger tapped for pipe (inches)	Cup Leather Hole Size for Check & Plunger (inches)	Capacity per Stroke, US Gallons
7039ENL	2	1-13/16	10	3/8	1-3/16	.1120
7039XNL	2	1-13/16	14	3/8	1-3/16	.1570



Replacement Parts

450 Replacement Parts	
Description	Part Number
Check assembly	8515AP/8515APNL
Plunger assembly	8514B



Seating Tool

## 451 SEATING TOOL Features:

- Attaches to drill rod string to run and seat the 450 cylinder securely in place.

Part Number	Description	Ctn Qty
8041A	2" seating tool	1





# Cylinder Replacement Parts, Operating Data



**CLAYTON MARK®**

Product Number	Description
8034D	Cylinder Packer Rubber 450/7039
8041A	Seating Tool for 450 Cylinders
8099DNL	Plunger Poppet 442 2-1/4" NO LEAD
8514BNL	Plunger Assembly 450/7039 1 13/16
8515APNL	Check Assembly 450/7039 2" NO LEAD
8522ANL	Plunger Assembly w/ leathers 442 1 11/16" NO LEAD
8522CNL	Plunger Assembly w/ leathers 442 2" NO LEAD
8522FNL	Plunger Assembly w/ leathers 442 2 1/2" NO LEAD
8522JNL	PLUNGER ASSY W/LEATHERS 442 3
8533CNL	CHECK ASMBLY W/LTHRS 449B 17/8
8599ANL	Plunger Assembly w/ leathers 449B 1 7/8" NO LEAD

**Table showing amount of water discharged per stroke by single acting cylinder.  
The diameter of cylinder and length of stroke being known.**

Dia. of pump cylinder in inches	Length of stroke in inches with capacity per stroke in gallons												Area of circle cylinder sq in
	1	2	3	4	5	6	7	8	10	12	18	24	
1 3/8	.0064	.0128	.0192	.0256	.0320	.0384	.0448	.0512	.0640	.0768	.1152	.1536	1.4849
1 1/2	.0076	.0153	.0229	.0306	.0382	.0459	.0535	.0612	.0765	.0918	.1375	.1832	1.7671
1 5/8	.0090	.0180	.0270	.0360	.0450	.0540	.0630	.0720	.0900	.1080	.1620	.2140	2.0739
1 3/4	.0104	.0208	.0312	.0416	.0512	.0625	.0729	.0833	.1041	.1249	.1872	.2497	2.4053
1 13/16	.0112	.0224	.0336	.0448	.0560	.0672	.0784	.0896	.1120	.1344	.2016	.2688	2.5802
1 7/8	.0120	.0240	.0360	.0480	.0600	.0720	.0840	.0960	.1200	.1440	.2160	.2280	2.7612
1 31/32	.0132	.0263	.0395	.0527	.0659	.0790	.0922	.1054	.1317	.1580	.2371	.3161	3.0440
2	.0136	.0272	.0408	.0544	.0680	.0816	.0952	.1088	.1360	.1632	.2448	.3264	3.1416
2 3/16	.0163	.0325	.0488	.0650	.0812	.0976	.1137	.1300	.1625	.1952	.2928	.3904	3.7584
2 1/4	.0172	.0344	.0516	.0688	.0860	.1033	.1205	.1377	.1721	.2071	.3104	.4137	3.9760
2 1/2	.0212	.0425	.0637	.0850	.1062	.1275	.1487	.1700	.2125	.2550	.3825	.5100	4.9070
2 3/4	.0257	.0514	.0771	.1028	.1285	.1543	.1800	.2057	.2571	.3085	.4628	.6171	5.9395
3	.0306	.0612	.0918	.1224	.1530	.1836	.2142	.2448	.3060	.3672	.5508	.7344	7.0686

To obtain the capacity of a pump with a diameter of cylinder given in the table, but with a longer stroke than 24 inches (the longest stroke given in the table), add or multiply the capacity to represent the required length of stroke.

For instance: The capacity of a cylinder with a 30 inch stroke would be the same as that (having the same diameter) of an 18 inch stroke cylinder, added to the capacity of a 12 inch stroke cylinder. The same result may be obtained by multiplying the capacity of a cylinder with a 10 inch stroke by 3.

To obtain the amount of water discharged per minute, multiply the capacity per stroke by the number of strokes per minute. To obtain the amount of water discharged per hour, multiply this figure by 60.

Capacities are given in American Gallons. To find English gallons, deduct 1/6; to find liters, multiply by 3.75.



**www.cbsupplies.ca**  
**Phone: (866) 503-5523 Fax: (888) 562-2095**  
**AGI@cbsupplies.ca**

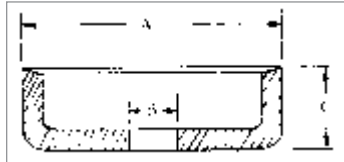




# Cup Leathers



702/41



**CLAYTON MARK®**



### 702/41 Universal Features:

- Untreated economy leathers.
- Flesh side out.
- Used for open type hand pumps (pitcher pumps), jet packers and on any application calling for a stationary seal.
- Made in USA.

**ORDER IN TUBE QUANTITY ONLY**

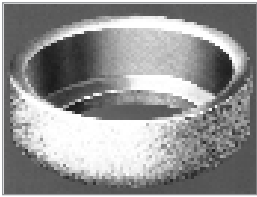
NEW Part Number	OLD Part Number	Finish	A Cylinder I.D. Leather O.D.	B Hole Size Leather I.D.	C Height	Tube Qty
<b>702/41 Universal</b>						
702-022	L101000006	702/41	1"	3/8"	7/16"	12
702-048	L101020006	702/41	1-1/8"	3/8"	1/2"	12
702-061	L101040006	702/41	1-1/4"	3/8"	1/2"	12
702-063	L101040008	702/41	1-1/4"	1/2"	1/2"	12
702-095	L101060010	702/41	1 3/8"	5/8"		12
702-109	L101080006	702/41	1-1/2"	3/8"	5/8"	12
702-169	L101120010	702/41	1-3/4"	5/8"	11/16"	12
702-198	L101130103	702/41	1-13/16"	1-3/16"	3/4"	12
702-216	L101140105 *	702/41	1-7/8"	1-5/16"	3/4"	12
702-220	L101140104 **	702/41	1-7/8"	1-1/4"	3/4"	12
702-263	L102000104	702/41	2"	1-1/4"	3/4"	12
702-264	L102000105	702/41	2"	1-5/16"	3/4"	12
702-333	L102040106	702/41	2-1/4"	1-3/8"	3/4"	12
702-334	L102040108 *	702/41	2 1/4"	1 1/2"	3/4"	12
702-358	L102080110	702/41	2-1/2"	1-5/8"	13/16"	12
702-384	L102120114 *	702/41	2-3/4"	1-7/8"	13/16"	12
702-410	L103000200	702/41	3"	2"	13/16"	12
702-464	L103080208	702/41	3-1/2"	2-1/2"	1"	12
702-521	L104000300	702/41	4"	3"	1-1/16"	6
702-636	L106000408	702/41	6"	4 1/2"		6

\* Standard Clayton Mark hole size  
\*\* Standard Midland hole size

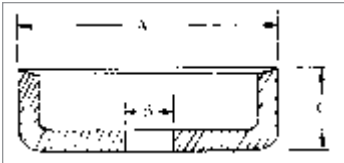


**www.cbsupplies.ca**  
 Phone: (866) 503-5523 Fax: (888) 562-2095  
 AGI@cbsupplies.ca





704/46  
Oil Fill



### 704/46 Oil Fill Features:

- Oak tanned leather and oil treated.
- Oil treatment waterproofs and retards swelling of leather inside cylinders.
- Reduces rod breakage or overloading motors.
- Oil treatment preserves leather insuring longer life.
- Flesh side out.
- Used in cylinders and piston pumps.
- Made in USA.



**CLAYTON MARK®**

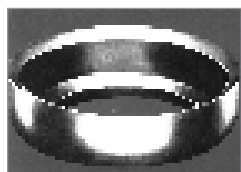


### ORDER IN TUBE QUANTITY ONLY

NEW Part Number	OLD Part Number	Finish	A Cylinder I.D. Leather O.D.	B Hole Size Leather I.D.	C Height	Tube Qty
<b>704/46 Oil Fill</b>						
704-010	L600140002	704/46	7/8"	1/8"		12
704-044	L601100000	704/46	1-1/8"	-	1/2"	12
704-048	L601020006	704/46	1-1/8"	3/8"	1/2"	12
704-092	L601060006	704/46	1-3/8"	3/8"	5/8"	12
704-105	L601080000	704/46	1 1/2"	SOLID	5/8"	12
704-109	L601080006	704/46	1-1/2"	3/8"	5/8"	12
704-198	L601130103	704/46	1-13/16"	1-3/16"	3/4"	12
704-220	L601140104 **	704/46	1-7/8"	1-1/4"	3/4"	12
704-255	L602000010	704/46	2"	5/8"	3/4"	12
704-264	L602000105	704/46	2"	1-5/16"	3/4"	12
704-333	L602040106	704/46	2-1/4"	1-3/8"	3/4"	12
704-334	L602040108 *	704/46	2-1/4"	1-1/2"		12
704-354	L602080104	704/46	2-1/2"	1-1/4"		12
704-358	L602080110	704/46	2-1/2"	1-5/8"	13/16"	12
704-384	L602120114 *	704/46	2-3/4"	1-7/8"	13/16"	12
704-409	L603000105	704/46	3"	1-7/8"		12
704-410	L603000200	704/46	3"	2"	13/16"	12
704-464	L603080208	704/46	3-1/2"	2-1/2"	1"	12
704-521	L604000300	704/46	4"	3"	1-11/16"	6

\* Standard Clayton Mark hole size  
\*\* Standard Midland hole size





### 706/42 Black Perfection Features:

- Hard, high-polished black finish leather
- Hair side out.
- Used for deep well cylinders as well as developing & testing new wells.
- Made in USA.



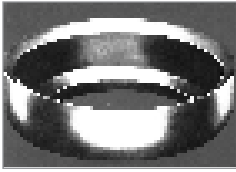
**ORDER IN TUBE QUANTITY ONLY**

NEW Part Number	OLD Part Number	Finish	Cylinder I.D. Leather O.D.	Hole Size Leather I.D.	C Height	Tube Qty
<b>706/42 Black Perfection</b>						
706-022	L201000006	706/42	1	3/8"	7/16"	12
706-063	L201040008	706/42	1-1/4"	1/2"	1/2"	12
706-064	L201040010	706/42	1 1/4"	5/8"	1/2"	12
706-073	L201050002	706/42	1 5/16"	1/8"		12
706-095	L201060010	706/42	1-3/8"	5/8"	5/8"	12
706-105	L201080000	706/42	1-1/2"	-	5/8"	12
706-112	L201080010	706/42	1-1/2"	5/8"	5/8"	12
706-127	L201100006	706/42	1-5/8"	3/8"	5/8"	12
706-155	L201110102	706/42	1-11/16"	1-1/8"	5/8"	12
706-166	L201120006	706/42	1 3/4"	3/8"		12
706-175	L201120102	706/42	1-3/4"	1-1/8"	11/16"	12
706-198	L201130103	706/42	1-13/16"	1-3/16"	3/4"	12
706-219	L201140103	706/42	1-7/8"	1-3/16"	3/4"	12
706-220	L201140104 **	706/42	1-7/8"	1-1/4"	3/4"	12
706-221	L201140105 *	706/42	1-7/8"	1-5/16"	3/4"	12
706-255	L202000010	706/42	2"	5/8"	3/4"	12
706-262	L202000103	706/42	2"	1-3/16"	3/4"	12
706-263	L202000104	706/42	2"	1-1/4"	3/4"	12
706-264	L202000105	706/42	2"	1-5/16"	3/4"	12
706-285	L202010104	706/42	2-1/16"	1-1/4"	3/4"	12
706-286	L202010105	706/42	2-1/16"	1-5/16"	3/4"	12
706-308	L202020104	706/42	2-1/8"	1-1/4"	3/4"	12
706-310	L202020106	706/42	2-1/8"	1-3/8"	3/4"	12
706-333	L202040106	706/42	2-1/4"	1-3/8"	3/4"	12
706-334	L202040108 *	706/42	2-1/4"	1-1/2"	3/4"	12
706-335	L202040110	706/42	2-1/4"	1-5/8"	3/4"	12
706-345	L202080008	706/42	2-1/2"	1/2"		12
706-358	L202080110	706/42	2-1/2"	1-5/8"	13/16"	12
706-359	L202080111	706/42	2-1/2"	1-11/16"	13/16"	12
706-360	L202080114	706/42	2-1/2"	1-7/8"	13/16"	12
706-384	L202120114 *	706/42	2-3/4"	1-7/8"	13/16"	12
706-409	L203000114	706/42	3"	1-7/8"	13/16"	12
706-410	L203000200	706/42	3"	2"	13/16"	12
706-435	L203010114	706/42	3 1/16"	1 7/8"		12
706-436	L203010200	706/42	3-1/16"	2"		12
706-464	L203080208	706/42	3-1/2"	2-1/2"	1"	12

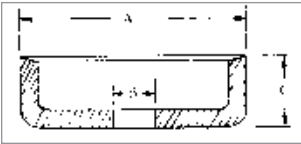




# Cup Leathers



707/45  
Graphite



### 707/45 Graphite Features:

- Selected from the center of hides.
- Flesh side out.
- Graphite coating prevents fast absorption of water and acts as a lubricant to reduce binding of the plunger in the cylinder.
- Made in USA.



**CLAYTON MARK®**



**ORDER IN TUBE QUANTITY ONLY**

NEW Part Number	OLD Part Number	Finish	A Cylinder I.D. Leather O.D.	B Hole Size Leather I.D.	C Height	Tube Qty
<b>707/45 Graphite</b>						
707-061	L501040006	707/45	1-1/4"	3/8"	1/2"	12
707-063	L501040008	707/45	1-1/4"	1/2"	1/2"	12
707-064	L501040010	707/45	1-1/4"	5/8"	1/2"	12
707-092	L501060006	707/45	1-3/8"	3/8"	5/8"	12
707-095	L501060010	707/45	1-3/8"	5/8"	5/8"	12
707-109	L501080006	707/45	1-1/2"	3/8"	5/8"	12
707-112	L501080010	707/45	1-1/2"	5/8"	5/8"	12
707-130	L501100010	707/45	1-5/8"	5/8"		12
707-149	L501110010	707/45	1-11/16"	5/8"		12
707-175	L501120102	707/45	1-3/4"	1-1/8"		12
707-198	L501130103	707/45	1-13/16"	1-3/16"	3/4"	12
707-215	L501140114	707/45	1-7/8"	7/8"	3/4"	12
707-220	L501140104 **	707/45	1-7/8"	1-1/4"	3/4"	12
707-221	L501140105 *	707/45	1-7/8"	1-5/16"	3/4"	12
707-255	L502000010	707/45	2"	5/8"	3/4"	12
707-264	L502000105	707/45	2"	1-5/16"	3/4"	12
707-286	L502010105	707/45	2-1/16"	1-5/16"	3/4"	12
707-300	L502020010	707/45	2-1/8"	5/8"	3/4"	12
707-333	L502040106	707/45	2-1/4"	1-3/8"	3/4"	12
707-334	L502040108 *	707/45	2-1/4"	1-1/2"	3/4"	12
707-639	L502060108	707/45	2 3/8"	1 1/2"	3/4"	12
707-357	L502080108	707/45	2-1/2"	1-1/2"	3/4"	12
707-358	L502080110	707/45	2-1/2"	1-5/8"	13/16"	12
707-359	L502080111	707/45	2-1/2"	1-11/16"	13/16"	12
707-384	L502120114 *	707/45	2-3/4"	1-7/8"	13/16"	12
707-410	L503000200	707/45	3"	2"	13/16"	12
707-436	L503010200	707/45	3 1/16"	2"		12
707-464	L503080208	707/45	3-1/2"	2-1/2"	1"	12
707-492	L503120210	707/45	3-3/4"	2-5/8"	1"	12
707-520	L504000212	707/45	4"	2-3/4"		6
707-521	L504000300	707/45	4"	3"	1-1/16"	6
707-615	L506000010	707/45	6"	5/8"		6

\* Standard Clayton Mark hole size  
\*\* Standard Midland hole size

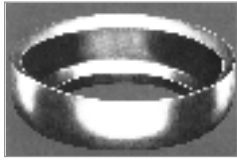


**www.cbsupplies.ca**  
 Phone: (866) 503-5523 Fax: (888) 562-2095  
 AGI@cbsupplies.ca

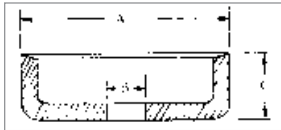




# Cup Leathers



711/44  
Waterproof



### 711/44 Waterproof Features:

- Soft, pliable waterproof.
- Hair side out.
- For use on piston pumps, shallow setting brass-cylinder barrels, air pumps and other applications where minimum water absorption and swelling is desired.
- Made in USA.



**CLAYTON MARK®**



**ORDER IN TUBE QUANTITY ONLY**

NEW Part Number	OLD Part Number	Finish	Cylinder I.D. Leather O.D.	Hole Size Leather I.D.	Height	Tube Qty
<b>711/44 Waterproof</b>						
711-021	L401000004	711/44	1"	1/4"	7/16"	12
711-022	L401000006	711/44	1"	3/8"	7/16"	12
711-024	L401000008	711/44	1"	1/2"	7/16"	12
711-037	L401010010	711/44	1-1/16"	5/8"		12
711-048	L401020006	711/44	1-1/8"	3/8"	1/2"	12
711-050	L401020008	711/44	1-1/8"	1/2"	1/2"	12
711-057	L401040000	711/44	1 1/4"	-	1/2"	12
711-061	L401040006	711/44	1-1/4"	3/8"	1/2"	12
711-062	L401040007	711/44	1-1/4"	7/16"	1/2"	12
711-063	L401040008	711/44	1-1/4"	1/2"	1/2"	12
711-064	L401040010	711/44	1-1/4"	5/8"		12
711-076	L401050006	711/44	1-5/16"	3/8"		12
711-078	L401050008	711/44	1-5/16"	1/2"		12
711-092	L401060006	711/44	1-3/8"	3/8"	5/8"	12
711-094	L401060008	711/44	1-3/8"	1/2"	5/8"	12
711-095	L401060010	711/44	1-3/8"	5/8"	5/8"	12
711-098	L401060014	711/44	1-3/8"	7/8"	5/8"	12
711-109	L401080006	711/44	1-1/2"	3/8"	5/8"	12
711-111	L401080008	711/44	1-1/2"	1/2"	5/8"	12
711-112	L401080010	711/44	1-1/2"	5/8"	5/8"	12
711-129	L401100008	711/44	1-5/8"	1/2"	5/8"	12
711-130	L401100010	711/44	1-5/8"	5/8"	5/8"	12
711-135	L401100100	711/44	1-5/8"	1"	5/8"	12
711-149	L401110010	711/44	1-11/16"	5/8"	5/8"	12
711-151	L401110103	711/44	1 11/16"	1 3/16"		12
711-154	L401110100	711/44	1-11/16"	1"	5/8"	12
711-155	L401110102	711/44	1-11/16"	1-1/8"	5/8"	12
711-169	L401120010	711/44	1-3/4"	5/8"	11/16"	12
711-174	L401120100	711/44	1 3/4"	1"	11/16"	12
711-175	L401120102	711/44	1-3/4"	1-1/8"	11/16"	12
711-192	L401130012	711/44	1-13/16"	3/4"		12
711-198	L401130103	711/44	1-13/16"	1-3/16"	3/4"	12
711-211	L401140008	711/44	1-7/8"	1/2"	3/4"	12
711-212	L401140010	711/44	1-7/8"	5/8"	3/4"	12
711-217	L401140100	711/44	1-7/8"	1"	3/4"	12
711-219	L401140103	711/44	1-7/8"	1-3/16"	3/4"	12
711-220	L401140104 **	711/44	1-7/8"	1-1/4"	3/4"	12
711-221	L401140105 *	711/44	1-7/8"	1-5/16"	3/4"	12

\* Standard Clayton Mark hole size  
\*\* Standard Midland hole size



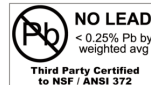
**www.cbsupplies.ca**  
**Phone: (866) 503-5523 Fax: (888) 562-2095**  
**AGI@cbsupplies.ca**





# Cup Leathers

711/44 Waterproof - continued.  
ORDER IN TUBE QUANTITY ONLY



**CLAYTON MARK®**

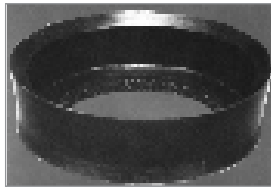
NEW Part Number	OLD Part Number	Finish	Cylinder I.D. Leather O.D.	Hole Size Leather I.D.	Height	Tube Qty
<b>711/44 Waterproof - Continued</b>						
711-233	L401150010	711/44	1-15/16"	5/8"	3/4"	12
711-240	L401150103	711/44	1-15/16"	1-3/16"	3/4"	12
711-242	L401150105	711/44	1-15/16"	1-5/16"	3/4"	12
711-248	L402000000	711/44	2"	SOLID	3/4"	12
711-254	L402000008	711/44	2"	1/2"	3/4"	12
711-255	L402000010	711/44	2"	5/8"	3/4"	12
711-259	L402000015	711/44	2"	15/16"	3/4"	12
711-262	L402000103	711/44	2"	1-3/16"	3/4"	12
711-263	L402000104	711/44	2"	1-1/4"	3/4"	12
711-264	L402000105	711/44	2"	1-5/16"	3/4"	12
711-267	L402000110	711/44	2"	1-5/8"	3/4"	12
711-277	L402010010	711/44	2-1/16"	5/8"	3/4"	12
711-284	L402010103	711/44	2-1/16"	1-3/16"	3/4"	12
711-285	L402010104	711/44	2-1/16"	1-1/4"	3/4"	12
711-286	L402010105	711/44	2-1/16"	1-5/16"	3/4"	12
711-300	L402020010	711/44	2-1/8"	5/8"	3/4"	12
711-308	L402020104	711/44	2-1/8"	1-1/4"	3/4"	12
711-316	L402040000	711/44	2 1/4"	SOLID	3/4"	12
711-323	L402040010	711/44	2-1/4"	5/8"	3/4"	12
711-331	L402040104	711/44	2-1/4"	1-1/4"	3/4"	12
711-332	L402040105	711/44	2-1/4"	1-5/16"	3/4"	12
711-333	L402040106	711/44	2-1/4"	1-3/8"	3/4"	12
711-334	L402040108 *	711/44	2-1/4"	1-1/2"	3/4"	12
711-335	L402040110	711/44	2-1/4"	1-5/8"	3/4"	12
711-339	L402080000	711/44	2-1/2"	SOLID	13/16"	12
711-346	L402080010	711/44	2-1/2"	5/8"	13/16"	12
711-354	L402080104	711/44	2-1/2"	1-1/4"	13/16"	12
711-355	L402080105	711/44	2-1/2"	1-5/16"	13/16"	12
711-356	L402080106	711/44	2-1/2"	1-3/8"	13/16"	12
711-357	L402080108	711/44	2-1/2"	1-1/2"	13/16"	12
711-358	L402080110	711/44	2-1/2"	1-5/8"	13/16"	12
711-359	L402080111	711/44	2-1/2"	1-11/16"	13/16"	12
711-384	L402120114 *	711/44	2-3/4"	1-7/8"	13/16"	12
711-637	L402140114	711/44	2-7/8"	1-7/8"	13/16"	12
711-406	L403000108	711/44	3"	1-1/2"	13/16"	12
711-409	L403000114	711/44	3"	1-7/8"	13/16"	12
711-410	L403000200	711/44	3"	2"	13/16"	12
711-638	L403000202	711/44	3"	2 1/8"	13/16"	12
711-435	L403010114	711/44	3-1/16"	1-7/8"	13/16"	12
711-436	L403010200	711/44	3-1/16"	2"	13/16"	12
711-464	L403080208	711/44	3-1/2"	2-1/2"	1"	12
711-492	L403120210	711/44	3-3/4"	2-5/8"	1"	12
711-495	L404000000	711/44	4"	SOLID	1-1/16"	6
711-518	L404000208	711/44	4"	2-1/2"	1-1/16"	6
711-520	L404000212	711/44	4"	2-3/4"	1-1/16"	6
711-521	L404000300	711/44	4"	3"	1-1/16"	6

\* Standard Clayton Mark hole size  
\*\* Standard Midland hole size

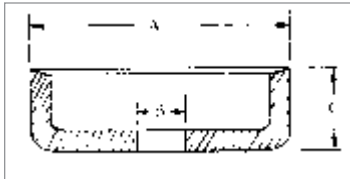


**www.cbsupplies.ca**  
Phone: (866) 503-5523 Fax: (888) 562-2095  
AGI@cbsupplies.ca





NEO/86 NEOFAB Cup



**CLAYTON MARK®**



### NEO/86 NEOFAB CUP Features:

- Enhanced endurance with lower replacement rates.
- Neoprene material with fabric insert in base.
- Outlasts all other leathers.
- Made in USA.

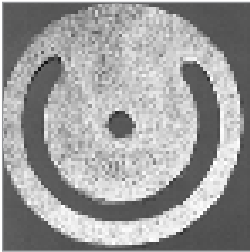
**ORDER IN TUBE QUANTITY ONLY**

NEW Part Number	OLD Part Number	Finish	A Cylinder I.D. Leather O.D.	B Hole Size Leather I.D.	C Height	Tube Qty
<b>NEO/86 NEOFAB CUP</b>						
NEO-220	L901140104 **	NEO/86	1-7/8"	1-1/4"	3/4"	3
NEO-221	L901140105 *	NEO/86	1-7/8"	1-5/16"	3/4"	3
NEO-255	L902000010	NEO/86	2"	5/8"	3/4"	3
NEO-264	L902000105	NEO/86	2"	1-5/16"	3/4"	3
NEO-334	L902040108 *	NEO/86	2-1/4"	1-1/2"	3/4"	3
NEO-358	L902080110	NEO/86	2-1/2"	1-5/8"	13/16"	3
NEO-384	L902120114 *	NEO/86	2-3/4"	1-7/8"	13/16"	3
NEO-410	L903000200	NEO/86	3"	2"	13/16"	3
NEO-464	L903080208	NEO/86	3-1/2"	2-1/2"	1"	3

\* Standard Clayton Mark hole size  
\*\* Standard Midland hole size



**CLAYTON MARK®**



V5 Series

### Valve Leathers for use with pitcher pumps and cylinders

#### 700/55 Universal Features:

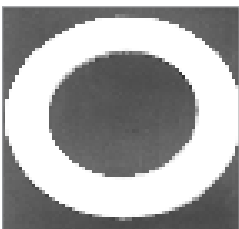
- Lower valve leather.
- Uniform, heavy stock with russet finish.
- Made in USA.



Part Number	Cylinder I.D.	Leather O.D.	Standard I.D.	Ctn Qty
<b>700/55 Universal</b>				
V502080200	2"	2 1/2"	2"	6
V502120204	2 1/4"	2 3/4"	2 1/4"	6
V503000206	2 1/2"	3"	2 3/8"	6
V503080214	3"	3 1/2"	2 7/8"	6
V503120302	3 1/4"	3 3/4"	3 1/8"	6
V504000304	3 1/2"	4"	3 1/4"	6
V504080312	4"	4 1/2"	3 3/4"	6
V505000404	4 1/4"	5"	4 1/4"	6
V505040408	4 1/2"	5 1/4"	4 1/2"	6
V506120512	6"	6 3/4"	5 3/4"	6

#### Pitcher Pump Leather Selection Chart

Pump Size	Part Number	Cylinder I.D.	Leather O.D.
No. 1	V503000206	2-1/2"	3
No. 2	V503080214	3"	3-1/2"
No. 3	V504000304	3-1/2"	4"
No. 4	V504080312	4"	4-1/2"



708/57 Universal Packing Ring

#### 708/57 Universal Packing Ring Features:

- General purpose leather washer or flat ring gasket.
- Universal finish for all applications.
- Soft, pliable leather for long life.
- Made in USA.



Part Number	Finish	Outside Diameter	Hole Size	Thickness
<b>708/57 Universal Packing Ring</b>				
R702000106	708/57	2"	1-3/8"	1/8"
R702080114	708/57	2-1/2"	1-7/8"	1/8"
R702120202	708/57	2-3/4"	2-1/8"	1/8"
R703000206	708/57	3"	2-3/8"	1/8"
R703080214	708/57	3-1/2"	2-7/8"	5/32"



This page blank